

# GEHL®

# DL12-40 GEN:3

TELESCOPIC HANDLERS

## PREVIEW



### KEY FEATURES

- ✓ Lift Heights 40'4" (12.3 m)
- ✓ High Performance 12,000 lbs. maximum capacity (5444 kg)
- ✓ 120-hp Tier IV Cummins Engine
- ✓ 4-Speed Powershift Transmission
- ✓ Four Wheel Drive / Four Wheel, Two Wheel & Crab Steering
- ✓ Exceptional Visibility and Spacious Cab
- ✓ Proportional Hydraulic System Controls

# DL12-40 GEN:3

## TELESCOPIC HANDLERS

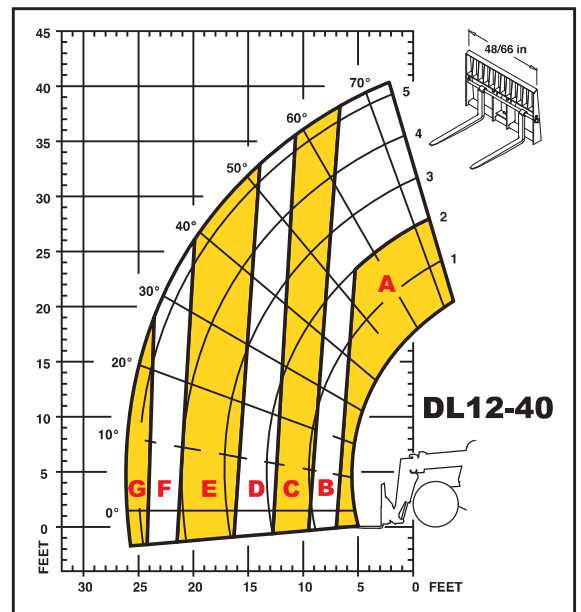


### SPECIFICATIONS

		DL12-40 GEN3
CAPACITIES	Lift Capacity (kg)	12,000 lbs. (5444)
	Maximum Lift Height (m)	40'4" (12.3)
	Capacity at Maximum Lift Height (kg)	10,000 lbs. (4536)
	Maximum Forward Reach (m)	26'4" (8.0)
	Maximum Capacity at Maximum Reach (kg)	2,000 lbs. (907)
	Reach Below Grade (mm)	1'4" (406)
LOADER PERFORMANCE	Breakout Force (kN)	14,000 lbf (62.2)
	Maximum Dump Height (m)	39'0" (11.9)
	Maximum Forward Reach at 45° Dump Angle (m)	11'10" (3.6)
	Dump Angle at Maximum Dump Height	24°
	Maximum Loadover Height (m)	40'3" (12.3)
	Maximum Dump Height at 45° Dump Angle (m)	30'9" (9.4)
	Max. Forward Reach at Max. Dump Height (m)	1'2" (356)
	Rollback at Ground Level	30°
Total Degrees of Bucket Rotation		132°
ENGINE	Manufacturer / Model	Cummins QSF 3.8 - Tier IV
	Power (kW)	120 hp (89)
	Aspiration	Turbocharged
	Rated Speed	2500 rpm
COMPONENTS	Transmission	Dana 4-Speed Power Shift
	Maximum Travel Speed (km/hr)	22.8 mph (36.7)
	Steering	4 Wheel • 2 Wheel • Crab
	Brake	Oil-Immersed, Disc-type
	Parking Brake	Spring-Applied, Hydraulic-Released
HYDRAULIC SYSTEM	Pump Type	Open-Center, Dual-Section
	Total Capacity (L/min)	43 gpm (162.8)
	Main Relief Pressure (bar)	3000 psi (207)
	Auxiliary Relief Pressure (bar)	2500 psi (172)
DIMENSIONS	Hydraulic Tank Capacity (L)	62.5 gal. (237)
	Approximate Weight (kg)	25,300 lbs. (11,475)
	Length – Less Forks (m)	19'4" (5.9)
	Width (m)	8'3" (2.5)
	Ground Clearance (mm)	16" (400)
	Wheelbase (m)	10'8" (3.3)
	Turning Radius (m)	12'2" (3.7)
	Overall Height (m)	7'11" (2.4)
	Frame Leveling – Left / Right	10° / 10°
	Fuel Capacity (L)	30 gal. (114)
Recommended Tire Type	14.00 x 24 G2 12-ply	

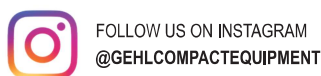
### LOAD CHARTS

Load charts are based on a 24" (610 mm) load center per ANSI/ITSDF B56.6



- A** 12,000 lbs. (5443)
- B** 10,000 lbs. (4536)
- C** 8,000 lbs. (3629)
- D** 6,000 lbs. (2722)
- E** 4,000 lbs. (1814)
- F** 3,000 lbs. (1361)
- G** 2,000 lbs. (907)

**GEHL**  
gehl.com



Gehl reminds users to read and understand the operator's manual before operating any equipment. Also, make sure all safety devices and shields are in place and functioning properly.

Gehl reserves the right to add improvements or make changes in features and specifications at any time without notice or obligation.