



880 USt



590 ft



354 ft +
335 ft

The Legend Grows

LG 1800-1.0

Lattice boom mobile crane
Grue a fleche en treillis

LIEBHERR

Mobile and crawler cranes

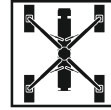
NEW



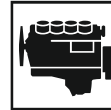
Preliminary

LG 1800-1.0





42 ft 8 in x 42 ft 8 in



505 kW (686 h.p.)



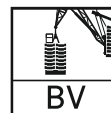
455 kW (619 h.p.)



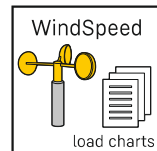
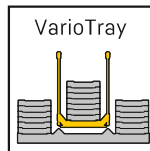
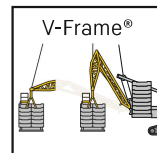
595,300 lb



882,000 lb



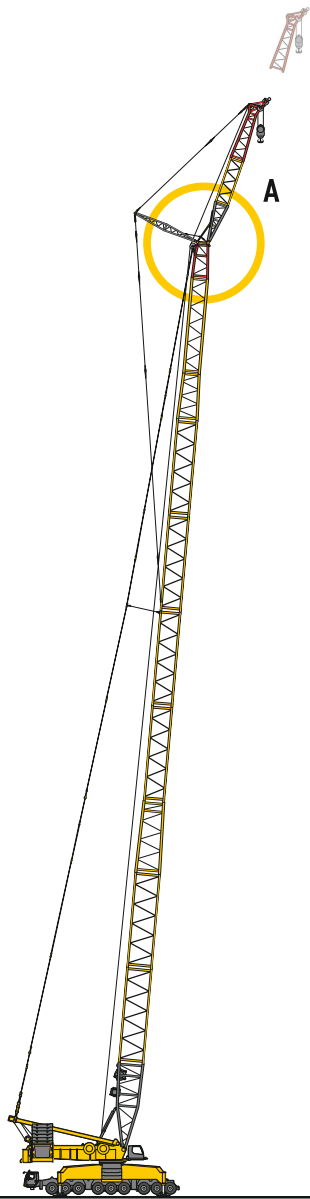
50 ft 6 in – 80 ft 1 in



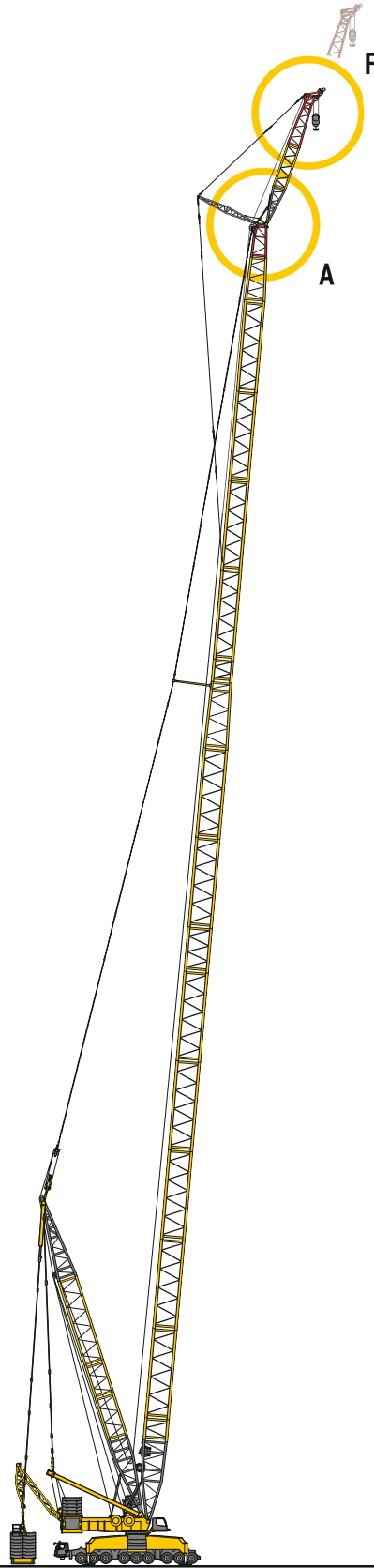
Boom/jib combinations

Configurations de flèche

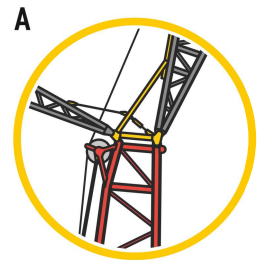
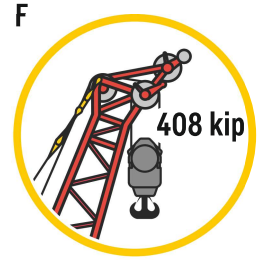
HSL4/5	Main boom, heavy/light • Flèche principale, lourde/légère
D2	Derrick • Flèche derrick
A	Adapter • Pièce d'adaptateur
Z	Additional guying support • Chevalet tendeur
F	Fixed lattice jib • Flechette a treillis fixe
BV	Suspended ballast V-frame ® • V-frame® de contrepoids suspendu



HSL5AF



HSL4AZD2FBV

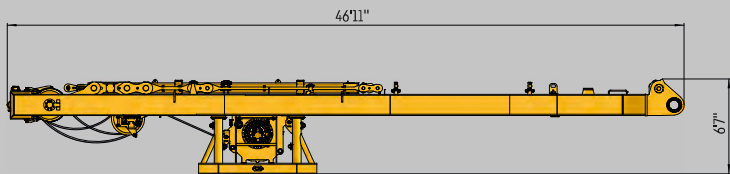


Transportation plan

Plan de transport

Part • Partie

SA-frame, winch 4 incl. rope and pulley block
Chevalet SA, treuil 4 incl. câble et bloc de poulies



1

US289-0015-00

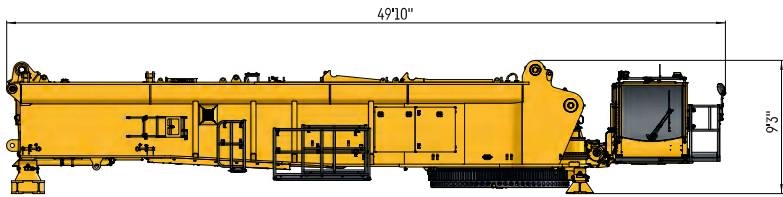


48,500 lb

+ 2,430 lb
Transport bracket
Support de transport

1

Superstructure with quick connection
Partie tournante avec quick connection



2

2

US289-0021-00

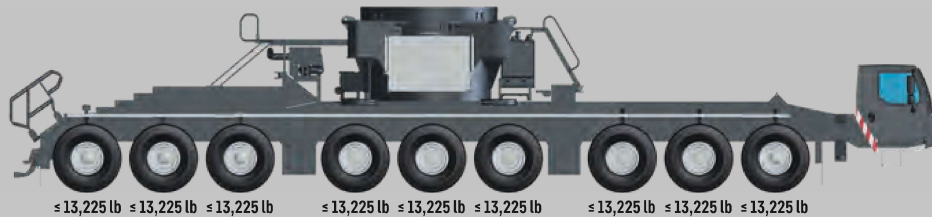
108,000 lb
(incl. QC)

+3,750 lb
Transport bracket
Support de transport

2

On-road driving 1: without 4 folding beams, 4 folding cylinders remain on the crane

Déplacement sur route 1: sans les 4 montants rabattables, les 4 vérins pivotants restent sur la grue



$\leq 119,025 \text{ lb}$

On-road driving 2: incl. 2 folding beams diagonal

Déplacement sur route 2: avec 2 montants rabattables en diagonale



$\leq 158,850 \text{ lb}$

On-road driving 3: incl. all 4 folding beams

Déplacement sur route 3: avec tous les 4 montants rabattables



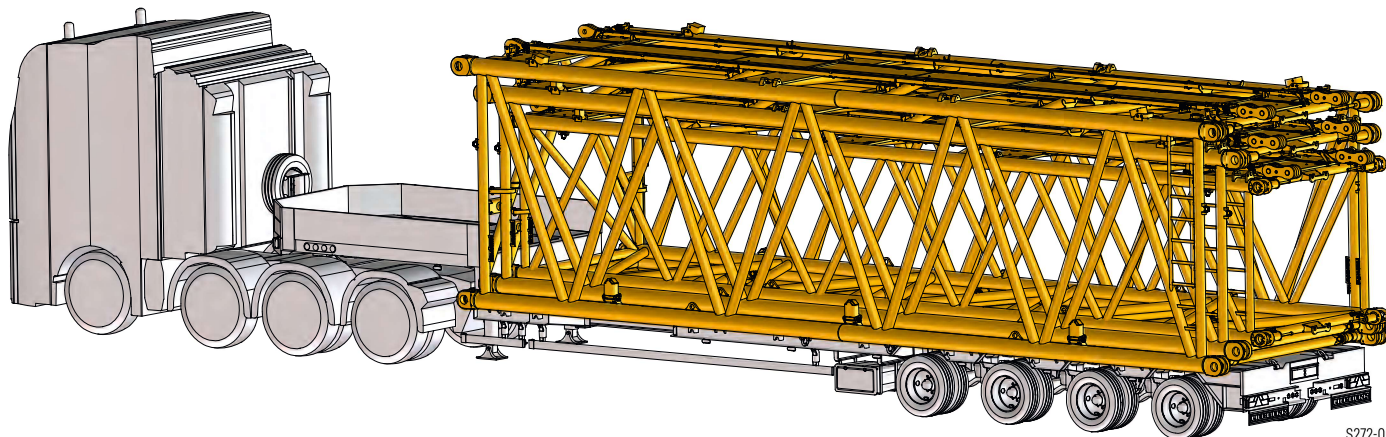
$\leq 198,450 \text{ lb}$

Total • total:

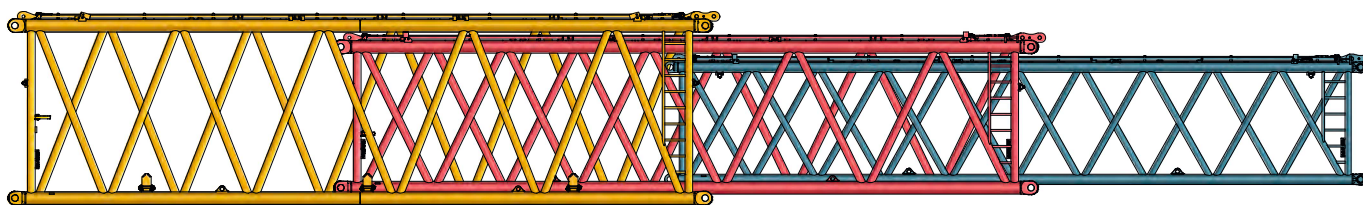
156,500 lb + 2

Economic transport worldwide

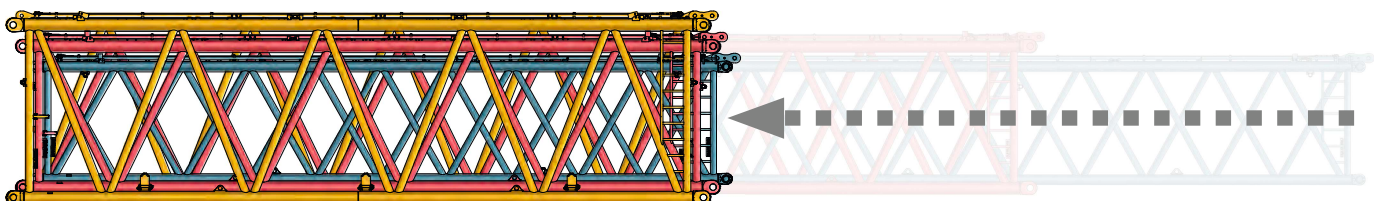
Un transport économique partout dans le monde



S272-0002-00

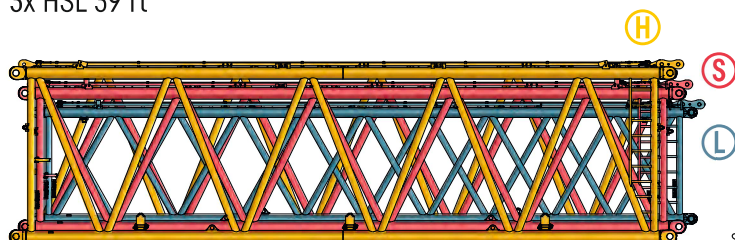


S272-0003-00



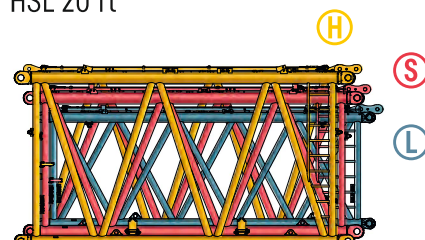
S272-0004-00

3x HSL 39 ft



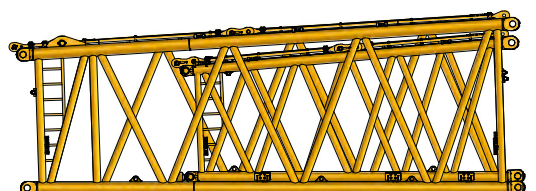
S272-0004-00

HSL 20 ft



S272-0005-00

HS-reduction section incl. SL-reduction section
Élément réducteur HS incl. élément réducteur SL



S272-0007-00

HSL4AZD2FBV

HSL4 472 - 482

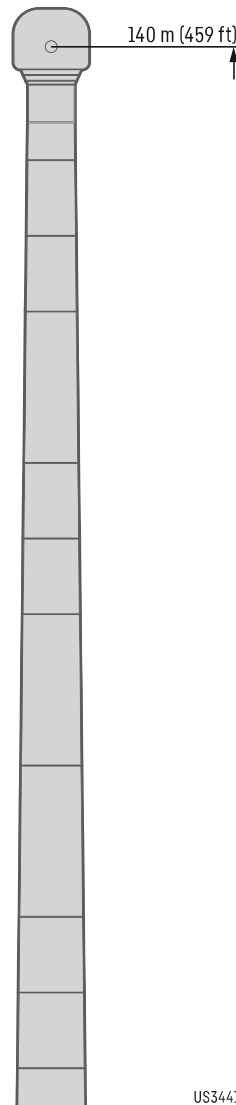


661,400 - 881,800 lb
440,900 - 659,200 lb
220,500 - 438,800 lb
0 lb

Preliminary
Préliminaire

		HSL4 472 ft		
		F 39 ft	F 49 ft	F 59 ft
ft		12°		
75	BV110kip	332		
	Bvmax	371		
80	BV110kip	308	312	
	Bvmax	369	332	
85	BV110kip	286	290	274
	Bvmax	366	328	274
90	BV110kip	269	273	267
	Bvmax	363	322	268
95	BV110kip	251	255	257
	Bvmax	360	315	263
100	BV110kip	234	240	240
	Bvmax	356	310	258
110	BV110kip	206	212	211
	Bvmax	348	299	248
120	BV110kip	182	185	187
	Bvmax	337	288	240
130	BV110kip	159	164	165
	Bvmax	323	279	232
140	BV110kip	141	145	146
	Bvmax	309	270	224
150	BV110kip	123	127	129
	Bvmax	296	261	217
160	BV110kip	108	113	114
	Bvmax	283	254	211
170	BV110kip	93.6	98.5	100
	Bvmax	270	246	204
180	BV110kip	82.1	86.3	88.2
	Bvmax	259	238	199
190	BV110kip	71	75.2	77
	Bvmax	248	229	193
200	BV110kip	61.1	64.7	66.7
	Bvmax	238	220	188
220	BV110kip	42.8	47.1	49.3
	Bvmax	220	203	179
240	BV110kip	29.8	33.5	34.8
	Bvmax	204	189	171
260	BV110kip	18.9	22.5	24.2
	Bvmax	190	177	163
280	BV110kip			14.4
	Bvmax	179	165	153
300	BV110kip			
	Bvmax	167	156	144
320	BV110kip			
	Bvmax	153	147	136
340	BV110kip			
	Bvmax	139	139	129
360	BV110kip			
	Bvmax	125	127	122
380	BV110kip			
	Bvmax	111	114	113
400	BV110kip			
	Bvmax	98.7	102	103
420	BV110kip			
	Bvmax	87.6	90.3	91.8
440	BV110kip			
	Bvmax	76.9	79.8	81.4
460	BV110kip			
	Bvmax			71.5

		HSL4 482 ft		
		F 39 ft	F 49 ft	F 59 ft
ft		12°		
75	BV110kip	324		
	Bvmax	367		
80	BV110kip	300	304	
	Bvmax	366	324	
85	BV110kip	282	287	277
	Bvmax	365	325	277
90	BV110kip	262	266	270
	Bvmax	363	324	272
95	BV110kip	247	251	251
	Bvmax	361	320	266
100	BV110kip	230	234	236
	Bvmax	358	314	261
110	BV110kip	202	205	208
	Bvmax	352	302	252
120	BV110kip	178	181	183
	Bvmax	344	292	243
130	BV110kip	157	160	162
	Bvmax	334	283	235
140	BV110kip	136	141	144
	Bvmax	322	273	228
150	BV110kip	120	124	127
	Bvmax	311	265	221
160	BV110kip	104	109	112
	Bvmax	299	258	214
170	BV110kip	91.6	96.6	97.1
	Bvmax	288	251	207
180	BV110kip	78.6	83.5	85.3
	Bvmax	277	243	201
190	BV110kip	68.5	72.8	73.8
	Bvmax	267	237	196
200	BV110kip	58.4	62.3	64.5
	Bvmax	257	230	191
220	BV110kip	41.4	45.4	47.1
	Bvmax	238	217	182
240	BV110kip	28.4	31.6	33.3
	Bvmax	222	203	173
260	BV110kip			
	Bvmax	207	190	166
280	BV110kip			
	Bvmax	192	179	159
300	BV110kip			
	Bvmax	172	168	153
320	BV110kip			
	Bvmax	154	156	146
340	BV110kip			
	Bvmax	137	140	137
360	BV110kip			
	Bvmax	123	125	126
380	BV110kip			
	Bvmax	109	112	114
395	BV110kip			
	Bvmax	101	103	104
400	BV110kip			
	Bvmax	97.6	101	101
420	BV110kip			
	Bvmax	86.3	89.1	90.5
440	BV110kip			
	Bvmax	75.8	78.7	80.3
460	BV110kip			
	Bvmax		69.1	70.6



HSL4AZD2FBV

HSL4 492 – 502

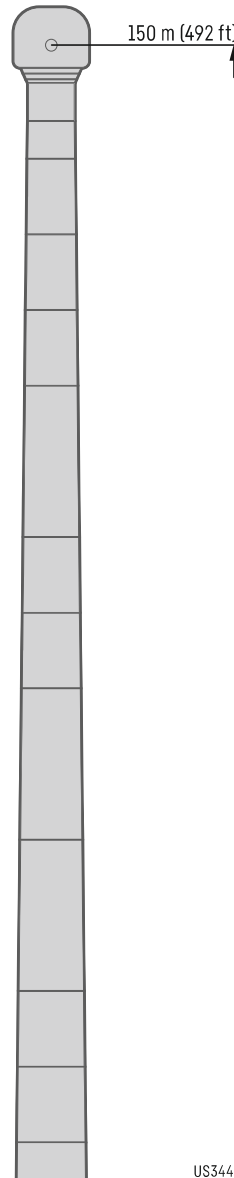


661,400 - 881,800 lb
440,900 - 659,200 lb
220,500 - 438,800 lb
0 lb

Preliminary
Préliminaire

		HSL4 492 ft		
		F 39 ft	F 49 ft	F 59 ft
ft		12°		
75	BV110kip	319		
	Bvmax	351		
80	BV110kip	299	296	
	Bvmax	350	313	
85	BV110kip	277	279	273
	Bvmax	349	313	275
90	BV110kip	261	262	262
	Bvmax	348	314	270
95	BV110kip	242	243	247
	Bvmax	346	312	265
100	BV110kip	228	229	229
	Bvmax	344	310	259
110	BV110kip	200	200	203
	Bvmax	338	301	251
120	BV110kip	175	176	178
	Bvmax	331	290	242
130	BV110kip	154	157	157
	Bvmax	321	282	233
140	BV110kip	135	137	139
	Bvmax	311	273	226
150	BV110kip	119	120	122
	Bvmax	300	264	219
160	BV110kip	103	105	107
	Bvmax	289	257	213
170	BV110kip	90.2	92.2	93.1
	Bvmax	279	249	207
180	BV110kip	78	79.2	81.2
	Bvmax	268	240	201
190	BV110kip	66.8	68.2	69.9
	Bvmax	258	233	195
200	BV110kip	57.2	58.7	60.2
	Bvmax	249	225	191
220	BV110kip	40.2	41.7	43.6
	Bvmax	231	209	182
240	BV110kip	27.6	28.4	30
	Bvmax	215	195	173
260	BV110kip			19.4
	Bvmax	201	182	166
280	BV110kip			
	Bvmax	189	172	158
300	BV110kip			
	Bvmax	171	162	149
320	BV110kip			
	Bvmax	153	151	141
340	BV110kip			
	Bvmax	137	137	132
360	BV110kip			
	Bvmax	122	122	122
380	BV110kip			
	Bvmax	108	109	111
400	BV110kip			
	Bvmax	96.6	97.3	98.4
420	BV110kip			
	Bvmax	85	86.3	87.6
440	BV110kip			
	Bvmax	75	76.1	77.2
460	BV110kip			
	Bvmax	65.2	66.2	67.8
480	BV110kip			
	Bvmax			58.9

		HSL4 502 ft		
		F 39 ft	F 49 ft	F 59 ft
ft		12°		
80	BV110kip	293		
	Bvmax	338		
85	BV110kip	275	274	
	Bvmax	339	303	
90	BV110kip	255	257	258
	Bvmax	340	303	274
95	BV110kip	240	242	242
	Bvmax	340	304	269
100	BV110kip	223	224	227
	Bvmax	340	304	264
110	BV110kip	197	198	199
	Bvmax	336	304	255
120	BV110kip	173	174	176
	Bvmax	330	296	247
130	BV110kip	151	154	154
	Bvmax	323	287	238
140	BV110kip	133	135	136
	Bvmax	314	278	231
150	BV110kip	116	118	119
	Bvmax	305	270	224
160	BV110kip	101	103	105
	Bvmax	296	262	218
170	BV110kip	88.5	90.8	91.6
	Bvmax	287	255	212
180	BV110kip	76.4	78.8	79.6
	Bvmax	277	249	206
190	BV110kip	65.8	67.4	69.4
	Bvmax	268	242	201
200	BV110kip	56.1	58	59.3
	Bvmax	259	235	196
220	BV110kip	39.3	40.9	43.1
	Bvmax	241	220	187
240	BV110kip	26.2	27.5	29.3
	Bvmax	225	206	178
260	BV110kip		17.1	18.8
	Bvmax	210	194	171
280	BV110kip			
	Bvmax	191	182	164
300	BV110kip			
	Bvmax	170	169	158
320	BV110kip			
	Bvmax	152	152	150
340	BV110kip			
	Bvmax	136	137	137
360	BV110kip			
	Bvmax	121	122	123
380	BV110kip			
	Bvmax	108	109	110
400	BV110kip			
	Bvmax	95.9	96.3	97.9
420	BV110kip			
	Bvmax	85	85.7	86.8
440	BV110kip			
	Bvmax	74.7	75.7	77
460	BV110kip			
	Bvmax	65.1	66.2	67.5
480	BV110kip			
	Bvmax		57.4	58.8



US3441

HSL4AZD2FBV

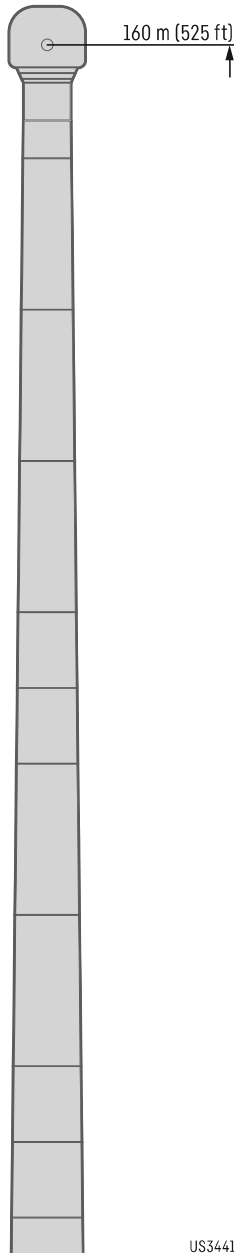
HSL4 532 - 541



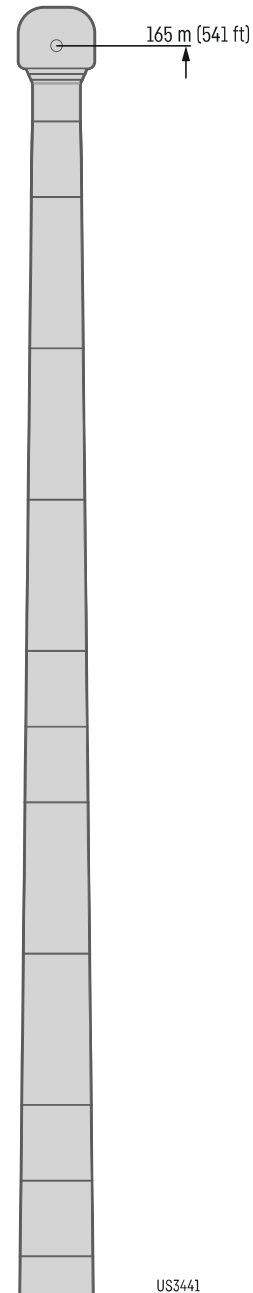
661,400 - 881,800 lb
440,900 - 659,200 lb
220,500 - 438,800 lb
0 lb

Preliminary
Préliminaire

		HSL4 532 ft		
		F 39 ft	F 49 ft	F 59 ft
12°				
80	BV110kip	270		
	Bvmax	296		
85	BV110kip	252	255	
	Bvmax	296	272	
90	BV110kip	235	239	241
	Bvmax	297	273	254
95	BV110kip	220	223	228
	Bvmax	298	273	254
100	BV110kip	206	209	213
	Bvmax	298	273	255
110	BV110kip	180	182	187
	Bvmax	298	274	255
120	BV110kip	158	159	164
	Bvmax	296	272	252
130	BV110kip	136	140	144
	Bvmax	292	268	245
140	BV110kip	119	120	126
	Bvmax	287	262	238
150	BV110kip	103	104	110
	Bvmax	281	257	231
160	BV110kip	88	90.2	95.7
	Bvmax	274	251	224
170	BV110kip	75.9	77.6	82.9
	Bvmax	265	245	218
180	BV110kip	63.9	65.5	71.3
	Bvmax	255	238	213
190	BV110kip	53.7	55.3	61
	Bvmax	246	232	207
200	BV110kip	44.6	45.7	50.5
	Bvmax	237	226	202
220	BV110kip	30.3		35.9
	Bvmax	221	213	193
240	BV110kip	17.7		
	Bvmax	205	200	185
260	BV110kip			
	Bvmax	190	187	177
280	BV110kip			
	Bvmax	175	173	169
300	BV110kip			
	Bvmax	158	159	159
320	BV110kip			
	Bvmax	141	142	146
340	BV110kip			
	Bvmax	126	126	131
360	BV110kip			
	Bvmax	111	112	116
380	BV110kip			
	Bvmax	98	98.9	103
400	BV110kip			
	Bvmax	86	86.6	90.4
420	BV110kip			
	Bvmax	74.4	75.2	79.5
440	BV110kip			
	Bvmax	64.2	65.2	69
460	BV110kip			
	Bvmax	54.9	55.5	59.3
480	BV110kip			
	Bvmax	46.8	47.5	50.9
500	BV110kip			
	Bvmax		40.5	43.3



		HSL4 541 ft		
		F 39 ft	F 49 ft	F 59 ft
12°				
85	BV110kip	246	228	242
	Bvmax	283	262	244
90	BV110kip	229	236	234
	Bvmax	283	263	245
95	BV110kip	214	221	223
	Bvmax	284	263	245
100	BV110kip	200	206	208
	Bvmax	284	263	246
110	BV110kip	174	180	182
	Bvmax	283	263	246
120	BV110kip	152	158	159
	Bvmax	282	261	243
130	BV110kip	132	138	141
	Bvmax	279	258	240
140	BV110kip	115	120	123
	Bvmax	274	253	235
150	BV110kip	99.4	104	107
	Bvmax	269	248	229
160	BV110kip	85.5	90.1	92.3
	Bvmax	263	243	223
170	BV110kip	73	77.3	79.3
	Bvmax	257	237	217
180	BV110kip	61	66.1	67.7
	Bvmax	247	231	211
190	BV110kip	50.8	55.9	57.5
	Bvmax	239	225	206
200	BV110kip	42	46.3	48.1
	Bvmax	231	219	201
220	BV110kip		31.7	33.4
	Bvmax	214	207	191
240	BV110kip			
	Bvmax	199	195	182
260	BV110kip			
	Bvmax	184	185	172
280	BV110kip			
	Bvmax	170	172	163
300	BV110kip			
	Bvmax	155	158	154
320	BV110kip			
	Bvmax	138	142	142
340	BV110kip			
	Bvmax	123	127	128
360	BV110kip			
	Bvmax	109	112	113
380	BV110kip			
	Bvmax	95.5	99.3	100
400	BV110kip			
	Bvmax	83.6	86.9	88.1
420	BV110kip			
	Bvmax	72	75.4	77.3
440	BV110kip			
	Bvmax	62	65.1	66.7
460	BV110kip			
	Bvmax	52.7	55.8	57.2
480	BV110kip			
	Bvmax	44.9	47.4	48.6
500	BV110kip			
	Bvmax	38.1	40.2	41.4
520	BV110kip			
	Bvmax			35.3



HSL4AZD2FBV

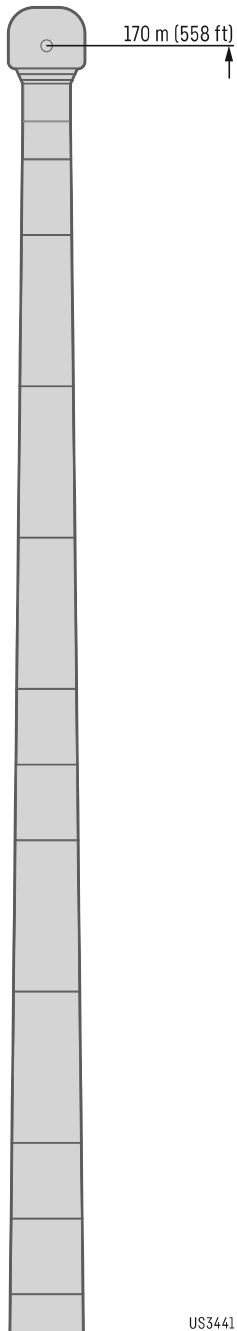
HSL4 561 - 571



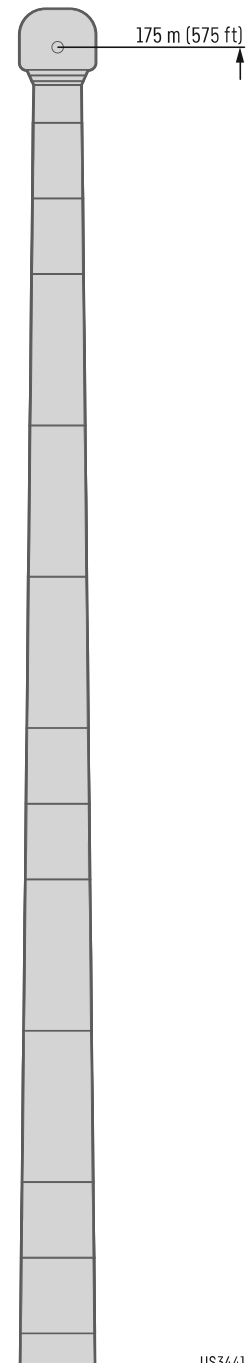
661,400 - 881,800 lb
440,900 - 659,200 lb
220,500 - 438,800 lb
0 lb

Preliminary
Préliminaire

		HSL4 561 ft		
		F 39 ft	F 49 ft	F 59 ft
12°				
80	BV110kip	251		
	Bvmax	257		
85	BV110kip	240	237	
	Bvmax	257	242	
90	BV110kip	224	225	222
	Bvmax	258	243	227
95	BV110kip	209	210	212
	Bvmax	258	243	227
100	BV110kip	195	195	198
	Bvmax	258	243	227
110	BV110kip	169	172	174
	Bvmax	257	243	226
120	BV110kip	149	149	151
	Bvmax	256	240	223
130	BV110kip	129	132	133
	Bvmax	253	236	220
140	BV110kip	112	114	117
	Bvmax	248	232	216
150	BV110kip	95.8	99.2	100
	Bvmax	243	228	212
160	BV110kip	83.1	84.7	87.3
	Bvmax	238	223	207
170	BV110kip	70.4	71.8	74.1
	Bvmax	232	218	202
180	BV110kip	59.4	60.3	62.2
	Bvmax	226	212	198
190	BV110kip	49.5	51.3	53
	Bvmax	220	208	193
200	BV110kip	40.4	42.4	44.1
	Bvmax	214	202	188
220	BV110kip	26.7	27.8	28.9
	Bvmax	203	191	178
240	BV110kip			
	Bvmax	191	181	169
260	BV110kip			
	Bvmax	178	171	159
280	BV110kip			
	Bvmax	165	160	151
300	BV110kip			
	Bvmax	151	149	143
320	BV110kip			
	Bvmax	136	136	134
340	BV110kip			
	Bvmax	121	122	123
360	BV110kip			
	Bvmax	107	108	109
380	BV110kip			
	Bvmax	93.6	94.9	96.2
400	BV110kip			
	Bvmax	81.1	82.5	84.1
420	BV110kip			
	Bvmax	70	71.4	72.5
440	BV110kip			
	Bvmax	60.1	60.9	62.5
460	BV110kip			
	Bvmax	50.6	51.8	53.1
480	BV110kip			
	Bvmax	42.6	43.3	44.9
500	BV110kip			
	Bvmax	36.2	36.8	37.9
520	BV110kip			
	Bvmax	30.3	30.9	31.9
540	BV110kip			
	Bvmax			26.4



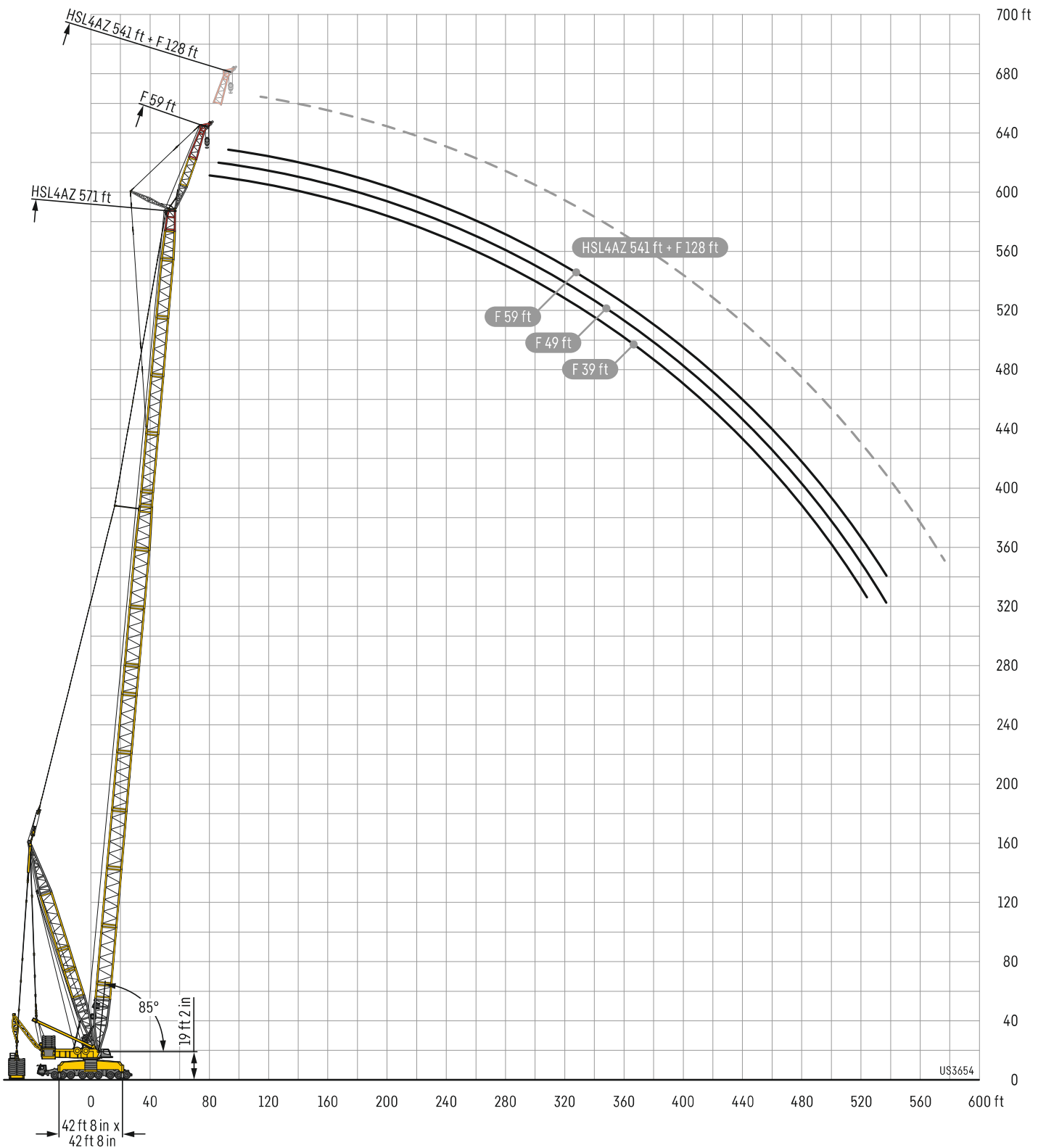
		HSL4 571 ft		
		F 39 ft	F 49 ft	F 59 ft
12°				
80	BV110kip	240		
	Bvmax	244		
85	BV110kip	232	227	
	Bvmax	244	231	
90	BV110kip	217	218	213
	Bvmax	245	232	217
95	BV110kip	202	203	206
	Bvmax	245	232	218
100	BV110kip	188	192	192
	Bvmax	245	232	218
110	BV110kip	165	166	169
	Bvmax	244	231	216
120	BV110kip	143	146	148
	Bvmax	243	229	213
130	BV110kip	125	127	129
	Bvmax	240	226	210
140	BV110kip	107	109	111
	Bvmax	236	222	206
150	BV110kip	92.7	94.7	96.4
	Bvmax	232	218	203
160	BV110kip	78.5	80.1	83.1
	Bvmax	227	213	199
170	BV110kip	65.7	68.5	69.9
	Bvmax	221	209	194
180	BV110kip	54.6	56.6	59
	Bvmax	216	204	190
190	BV110kip	46	46.9	48.5
	Bvmax	211	199	185
200	BV110kip	37.2	39.2	40.6
	Bvmax	205	194	181
220	BV110kip			
	Bvmax	194	183	171
240	BV110kip			
	Bvmax	183	172	162
260	BV110kip			
	Bvmax	170	162	153
280	BV110kip			
	Bvmax	158	153	145
300	BV110kip			
	Bvmax	145	143	137
320	BV110kip			
	Bvmax	133	132	128
340	BV110kip			
	Bvmax	117	119	119
360	BV110kip			
	Bvmax	103	105	106
380	BV110kip			
	Bvmax	90.2	91.5	92.9
400	BV110kip			
	Bvmax	77.9	78.8	80.9
420	BV110kip			
	Bvmax	66.8	67.9	69.3
440	BV110kip			
	Bvmax	56.2	57.3	59
460	BV110kip			
	Bvmax	47.9	48.5	49.7
480	BV110kip			
	Bvmax	39.8	40.8	42.2
500	BV110kip			
	Bvmax	33.4	34	35
520	BV110kip			
	Bvmax	27.4	28.2	29.3
540	BV110kip			
	Bvmax			23.7



Lifting heights

Hauteurs de levage

HSL4AZD2FBV



HSL5AF

HSL5 335 - 345

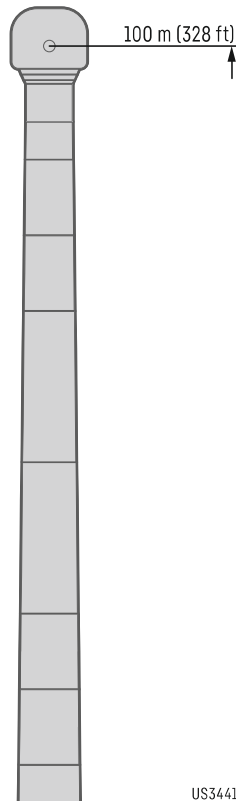


132,300 - 176,400 lb
44,100 - 130,000 lb
0t

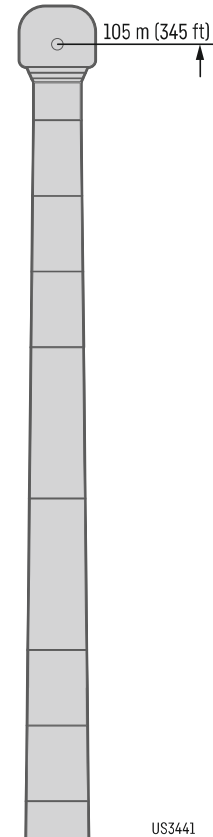
Preliminary
Préliminaire

ft	HSL5 335 ft		
	F 39 ft	F 49 ft	F 59 ft
	12°		
55	388		
60	383	348	
65	377	345	306
70	372	340	297
75	366	336	290
80	351	332	282
85	329	326	275
90	309	310	269
95	291	292	262
100	276	277	256
105	262	262	250
110	248	248	244
115	236	237	234
120	224	225	223
125	214	214	213
130	205	205	203
135	195	196	195
140	187	188	186
145	180	180	179
150	172	174	172
155	162	166	166
160	154	158	159
165	147	150	152
170	139	143	145
175	132	135	138
180	125	129	130
185	119	123	124
190	113	117	118
195	108	111	113
200	102	106	107
205	97.1	100	102
210	92.5	95.1	97.2
215	87.9	91.1	92.3
220	83.3	86.6	87.7
225	79.1	82.4	83.9
230	75.3	78	79.6
235	71.8	74.3	75.8
240	68	71	71.9
245	64.3	67.3	68.7
250	61	64	65.5
255	57.7	60.5	62
260	54.9	57.4	59
265	51.8	54.4	55.8
270	48.9	51.7	52.9
275	46.2	48.8	50.2
280	43.9	46.2	47.8
285	41.9	43.7	45.4
290	39.9	41.7	43.1
295	37.9	39.8	40.9
300	36	37.9	38.9
305	34.5	36.2	37.1
310	32.8	34.3	35.4
315	31	32.8	33.6
320	29.5	31.1	31.9
325	27.9	29.5	30.5
330		27.9	28.9
335		26.5	27.4
340			25.9
345			24.6

ft	HSL5 345 ft		
	F 39 ft	F 49 ft	F 59 ft
	12°		
60	369	335	
65	364	333	304
70	359	328	298
75	354	325	291
80	341	321	284
85	323	316	276
90	303	304	270
95	287	286	264
100	270	272	257
105	255	256	250
110	241	244	241
115	231	231	229
120	219	221	218
125	208	210	209
130	198	199	199
135	190	191	190
140	182	183	181
145	175	176	174
150	168	169	167
155	159	163	161
160	151	155	155
165	143	147	148
170	136	140	141
175	129	133	135
180	122	126	128
185	116	119	122
190	110	114	116
195	105	108	110
200	99.1	103	104
205	94.4	97.3	99.4
210	89.4	92.8	93.9
215	84.8	87.8	89.5
220	80.3	83.8	85.2
225	76.3	79.4	80.6
230	72.2	75.3	76.9
235	68.7	71.4	72.7
240	65	67.7	69.4
245	61.7	64.4	65.6
250	58.1	61.2	62.3
255	55.2	57.7	59.2
260	52.1	54.5	56.1
265	49.4	51.6	53.1
270	46.6	48.9	49.9
275	44.2	46.6	47.4
280	41.5	44.2	44.8
285	39.5	41.7	42.7
290	37.5	39.5	40.6
295	35.7	37.5	38.5
300	33.8	35.7	36.6
305	31.9	33.8	34.7
310	30.2	32.1	33
315	28.7	30.3	31.3
320	27.1	28.8	29.7
325	25.6	27.2	27.9
330	24	25.7	26.4
335	22.7	24.2	25
340		22.7	23.6
345		21.4	22.2
350			20.8
355			19.6



US3441



US3441

HSL5AF

HSL5 354 - 364

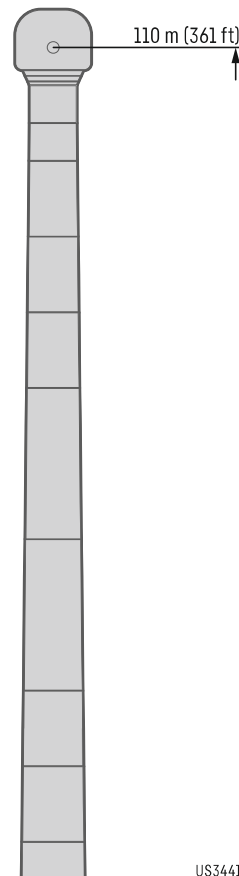


132,300 - 176,400 lb
44,100 - 130,000 lb
0t

Preliminary
Préliminaire

ft	HSL5 354 ft		
	F 39 ft	F 49 ft	F 59 ft
	12°		
60	353		
65	349	319	294
70	345	316	292
75	340	313	289
80	333	309	283
85	315	305	276
90	297	296	270
95	281	281	264
100	265	266	258
105	251	251	249
110	237	239	237
115	225	227	226
120	214	215	214
125	203	205	204
130	194	195	195
135	185	187	186
140	178	178	177
145	171	171	170
150	164	164	164
155	157	159	157
160	149	152	151
165	141	144	145
170	134	138	139
175	126	131	132
180	120	124	126
185	114	117	119
190	108	112	113
195	102	106	107
200	96.8	101	102
205	92	95.4	97.1
210	86.8	90.5	92.3
215	82.5	85.6	87.4
220	78	81.2	83.1
225	73.7	77.3	78.9
230	70.1	73.1	74.4
235	66.1	69.5	70.8
240	62.7	65.6	67.1
245	59.4	61.9	63.4
250	55.8	58.7	60.1
255	52.6	55.5	56.9
260	49.6	52.4	53.9
265	46.7	49.3	50.9
270	44.1	46.6	48
275	41.9	43.8	45.2
280	39.7	41.8	42.9
285	37.6	39.7	40.5
290	35.6	37.7	38.5
295	33.7	35.7	36.8
300	31.8	33.7	34.9
305	30.1	32	33
310	28.4	30.3	31.3
315	26.6	28.6	29.5
320	25.2	26.9	28
325	23.7	25.3	26.4
330	22.3	23.9	24.8
335	20.8	22.5	23.1
340	19.4	21	21.9
345	18.1	19.6	20.5
350		18.3	19.1
355		17	17.9
360			16.6
365			15.4

ft	HSL5 364 ft		
	F 39 ft	F 49 ft	F 59 ft
	12°		
60	339		
65	335	306	
70	330	304	280
75	327	300	278
80	323	297	275
85	312	294	272
90	295	288	269
95	277	276	265
100	262	259	256
105	248	246	245
110	234	233	232
115	223	222	221
120	213	211	210
125	201	201	200
130	192	191	191
135	182	182	182
140	175	174	173
145	168	166	165
150	162	160	159
155	155	154	152
160	148	148	147
165	140	142	141
170	133	134	135
175	126	128	129
180	119	121	122
185	113	114	117
190	107	109	110
195	102	103	105
200	96.4	97.4	99.2
205	90.6	92.4	93.8
210	86	87.4	89.3
215	81.5	82.7	84.5
220	77.2	78.4	79.8
225	72.8	74.1	75.6
230	68.9	70.3	71.5
235	65	66.1	67.7
240	61.5	62.6	64.1
245	58.1	59.3	60.5
250	55	55.6	57.4
255	51.9	52.7	53.8
260	48.8	50.2	51.1
265	45.8	47.3	48.4
270	43	44.5	46
275	40.6	42	43.4
280	38.5	39.6	40.8
285	36.6	37.2	38.5
290	34.6	35.4	36.3
295	32.6	33.3	34.4
300	30.7	31.4	32.7
305	29	29.5	30.7
310	27.3	27.8	28.9
315	25.5	26.2	27.3
320	23.9	24.6	25.5
325	22.4	22.9	24
330	20.9	21.4	22.5
335	19.5	20	21
340	18.1	18.5	19.4
345	16.8	17.2	18.1
350	15.4	15.9	16.7
355		14.6	15.6
360		13.4	14.2
365			13
370			11.9



HSL5AF

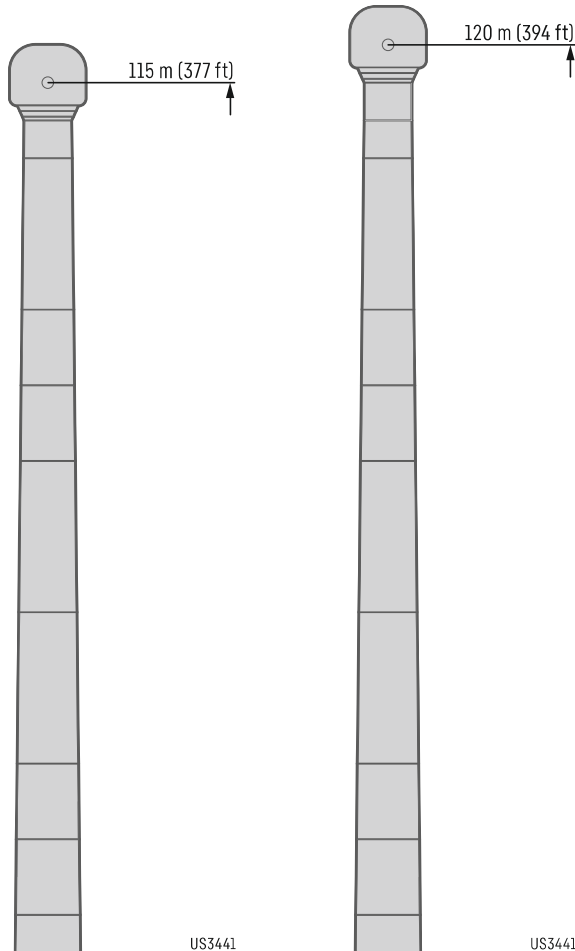
HSL5 374



132,300 - 176,400 lb
44,100 - 130,000 lb
0t

Preliminary
Préliminaire

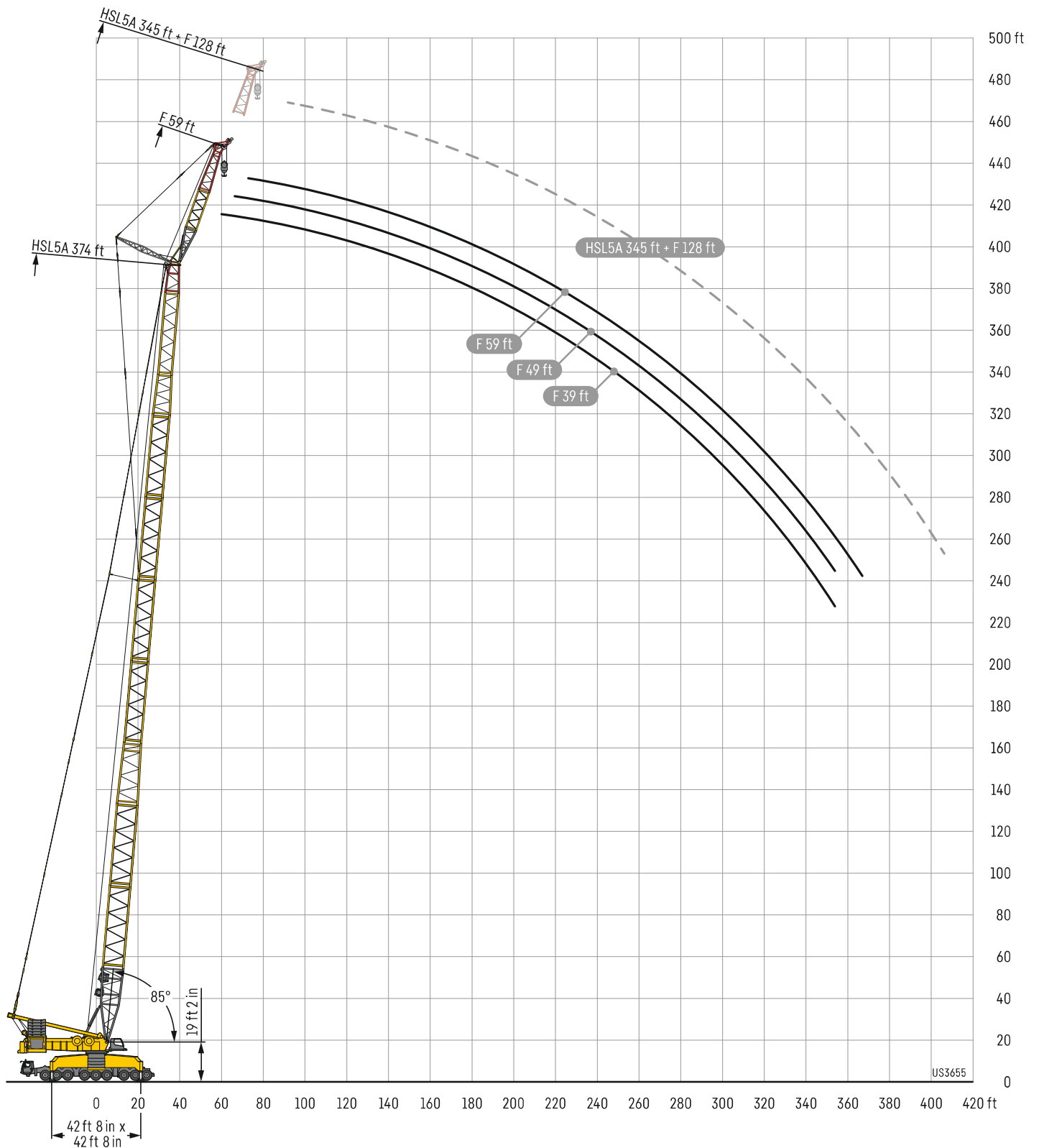
ft	HSL5 374 ft		
	F 39 ft	F 49 ft	F 59 ft
	12°		
60	324		
65	320	294	
70	317	291	269
75	313	288	267
80	307	285	264
85	300	282	261
90	289	278	259
95	273	270	256
100	258	255	250
105	244	242	239
110	231	229	229
115	218	217	217
120	208	207	206
125	198	197	196
130	189	188	187
135	180	179	178
140	171	171	170
145	164	163	162
150	158	156	155
155	151	150	149
160	146	144	143
165	138	139	138
170	131	132	133
175	124	126	127
180	118	120	120
185	111	113	115
190	106	107	109
195	99.6	101	104
200	94.8	96.4	97.5
205	89.7	90.9	92.8
210	84.6	86	87.5
215	80.2	81.2	83.2
220	75.8	77.1	78.5
225	71.6	72.9	74.4
230	67.3	68.7	70.4
235	63.5	65	66.3
240	60.1	61.4	62.5
245	56.3	57.5	59
250	53.5	54.3	55.5
255	50.6	51.1	52.4
260	48	48.4	49.3
265	45.2	46	46.7
270	42.4	43.4	44.5
275	40	41.1	42
280	37.3	38.6	39.9
285	35.4	36.3	37.5
290	33.6	34.1	35.3
295	31.6	32.3	33.2
300	29.6	30.4	31.2
305	27.8	28.6	29.5
310	26.1	26.7	27.8
315	24.5	25	26.1
320	22.9	23.4	24.3
325	21.4	21.9	22.7
330	19.8	20.5	21.3
335	18.3	18.9	19.8
340	17	17.4	18.4
345	15.7	16.1	17
350	14.3	14.8	15.6
355	13	13.5	14.4
360	11.9	12.3	13.1
365			11.9



Lifting heights

Hauteurs de levage

HSL5AF



US3655

Description of symbols

Explication des symboles



Max. capacity
Capacité max.



Radius
Portée



Max. boom length
Longueur maxi. de la fleche principale



Main boom HSL
Flèche principale HSL



Max. boom system length
Longueur maxi. du système de fleche



Derrick system D
Système derrick D



Counterweight
Contrepoids



Fixed lattice jib F
Flechette a treillis fixe F



Central ballast
Contrepoids central



Adapter A
Piese d'adaptateur A



Weight
Poids



Additional guying support
Chevalet tendeur



Engine
Moteur



Suspended ballast V-frame®
V-frame® de contrepoids suspendu



Outriggers
Calage

Remarks

1. The lifting capacities do not exceed 75 % of the tipping load according to ASME B 30.5. The crane's structural steelwork is in accordance with EN 13000 and ASME B 30.5.
2. For the calculation of the load charts at least a wind speed of 29 ft/s (9 m/s, 20.1 miles/hour) and regarding the load a sail area of 1 m² per ton load and a wind resistance coefficient of 1.2 on the load have been taken into account. For lifting of loads with large sail areas and/or high wind resistance coefficients the maximum wind speed as stated in the load charts has to be reduced.
3. The lifting capacities stated are valid for lifting operation only (corresponding with crane classification according to ISO 4301-1, crane group A1).
4. Lifting capacities are given in kip.
5. The weight of the hook blocks and hooks is part of the load and therefore it must be deducted from the lifting capacities.
6. The working radii are measured from the slewing centerline.
7. The subsoil must be even and of good bearing capacity.
8. Subject to modification of lifting capacities.
9. The data of this brochure serves only for general information. All information is provided without warranty. Instructions for the correct commissioning of the crane can be found in the operation manual and the load chart book.
10. The illustrations in this brochure may feature accessories and special equipment not included in the standard scope of delivery.

Remarques

1. La capacité de charge ne doit pas dépasser 75 % de la charge de basculement conformément à ASME B 30.5. La structure métallique de la grue est conforme à EN 13000 et ASME B 30.5.
2. Une vitesse de vent de 29 ft/s (9 m/s, 20.1 miles/hour) minimum, une surface de prise au vent de 1 m² par tonne ainsi qu'un coefficient de résistance au vent de la charge 1,2 sont pris en compte pour le calcul des tableaux de charge. Lorsque des charges ayant une surface de prise au vent et/ou un coefficient de résistance au vent plus élevé(e)s sont levées, la vitesse de vent maximale indiquée dans les tableaux de charge doit être réduite.
3. Forces de levage pour application de grue de montage (correspond à la classification de grues selon ISO 4301-1, groupe de grues A1).
4. Les charges sont indiquées en kip.
5. Le poids du crochet de levage resp. de la moufle à crochet est une partie de la charge et doit donc être déduit de la capacité de charge.
6. Les portées sont prises à partir de l'axe de rotation de la partie tournante.
7. Le sol doit être plat et résistant.
8. Charges données sous réserve de modification.
9. Les données de cette brochure sont données à titre informatif. Ces renseignements sont sans garantie. Les consignes relatives à la bonne mise en service de la grue sont disponibles dans le manuel d'utilisation et le manuel de tableaux de charge.
10. Les figures contiennent également des accessoires et des équipements spéciaux non inclus de série dans la livraison.

Highlights



LG 1800-1.0

Fast-erecting crane

Grue à montage rapide

Lattice boom mobile crane

Grue à flèche en treillis

Combines the mobile undercarriage on wheels with the high lifting capacities of a lattice boom crane

Combine le châssis mobile sur roues avec les charges élevées d'une grue à flèche en treillis

Wind farm optimized

Optimisation du parc éolien

9 ft 10 in vehicle width for manoeuvring

Largeur du véhicule de 9 ft 10 in lors de l'opération

Equipped to meet all road regulations

Équipé dans le respect de toutes les réglementations routières

Flexible worldwide axle loads

Charges par essieu flexibles à l'échelle mondiale

Proposition 65



WARNING: This product can expose you to chemicals, including exhaust emissions, including lead and lead compounds, which are known to the State of California to cause cancer, birth defects or other reproductive harm.

For more information see: www.P65warnings.ca.gov/diesel