

6036

TELEHANDLER

SKYTRAK

Performance

| | | |
|-----------------------------|----------|-------------|
| Rated Capacity | 2,722 kg | 6,000 lb |
| Maximum Lift Height | 11.0 m | 36 ft 1 in. |
| Load at Max Height | 2,722 kg | 6,000 lb |
| Maximum Forward Reach | 6.8 m | 22 ft 4 in. |
| Load at Max Reach | 816 kg | 1,800 lb |
| Frame Leveling | 10° | |
| Lift Speed (boom retracted) | | |
| Up | 11.5 sec | |
| Down | 9 sec | |
| Boom Speed | | |
| Extended | 13.5 sec | |
| Retracted | 14 sec | |
| Top Travel Speed (4-Speed) | 31 kph | 19 mph |
| Drawbar Pull (loaded) | 98 kN | 22,000 lb |
| Outside Turning Radius | 4.19 m | 165 in. |
| Operating Weight | 9,662 kg | 21,300 lb |

Standard Specifications

Engine

| | | |
|---------------------------|-----------------|------------|
| Make and Model | Cummins QSF3.8L | |
| No. of Cylinders | 4 | |
| Displacement | 3.8 L | 229 cu in. |
| Gross Power Basic | 63 kW | 85 hp |
| Maximum Torque @ 1400 rpm | 461 Nm | 340 lb-ft |
| Fuel Tank Capacity | 132.5 L | 35 gal |

Transmission

Powershift.
4-speed forward and 3-speed reverse.

Axles

Full-time planetary 4-wheel drive.
Oscillating rear axle with Stabil-Trak system.

Brakes

Hydraulically actuated inboard wet disc brakes.
Emergency brake with transmission declutch feature.

Tires

| | |
|----------|----------------------|
| Standard | 370/75-28 |
| Optional | Foam-Filled or Solid |

Cab

| | |
|---|--------------------------|
| Certified ROPS/FOPS structure | Rear view mirrors |
| Adjustable suspension seat with retractable seat belt | Single joystick controls |
| | Integrated arm rest |

Steering 4-Wheel

Power steering.
Operator selectable 4-wheel circle, 4-wheel crab, 2-wheel front.

Instruments

- Voltmeter
- Hourmeter
- Engine oil pressure gauge
- Temperature gauge
- Fuel gauge



Hydraulic System-Implement

| | | |
|----------|---------|----------|
| Capacity | 172.2 L | 45.5 gal |
|----------|---------|----------|

Gear Pump

Variable flow, load sensitive hydraulic system.

Load holding valves on frame level, stabilizer, attachment tilt, extend and lift cylinders.
Auxiliary hydraulics used for all attachments equipped with cylinders or other hydraulic components. Consists of valves, controls and hydraulic lines.

Accessories & Options

- Enclosed Cab
- Work Lights
- Road Lights
- Rotating Beacon
- Fenders
- Reverse Sensing System
- Air Conditioning

Attachments

| | | |
|--------------------------------|------------------------------|----------------------------|
| Standard Carriage | 1.3 m | 50 in. |
| | 1.5 m | 60 in. |
| | 1.8 m | 72 in. |
| Side-Tilt Carriage | 1.3 m | 50 in. |
| | 1.5 m | 60 in. |
| | 1.8 m | 72 in. |
| Swing 90° Carriage | 1.8 m | 72 in. |
| Side-Shift Carriage | 1.3 m | 50 in. |
| Dual Fork Positioning Carriage | 1.3 m | 50 in. |
| Tower Pallet Forks | 2.4 m (8 ft); 1.3 m (50 in.) | Standard Carriage |
| | 60 mm x 102 mm x 1.2 m | 2.36 in. x 4 in. x 48 in. |
| | 60 mm x 127 mm x 1.2 m | 2.36 in. x 5 in. x 48 in. |
| | 51 mm x 152 mm x 1.8 m | 2.00 in. x 6 in. x 72 in. |
| Lumber Forks | 51 mm x 178 mm x 1.5 m | 2 in. x 7 in. x 60 in. |
| | 60 mm x 152 mm x 1.5 m | 2.36 in. x 6 in. x 60 in. |
| Cubing Forks | 51 mm x 51 mm x 1.2 m | 2 in. x 2 in. x 48 in. |
| Fork Extensions | 2.3 m | 90 in. |
| Material Bucket | 1.8 m, 0.76 m³ | 72 in., 1.0 cu yd |
| | 2.4 m, 1.15 m³ | 96 in., 1.5 cu yd |
| | 2.6 m, 1.53 m³ | 102 in., 2.0 cu yd |
| | 2.4 m, 1.34 m³ | 96 in., 1.75 cu yd |
| Grapple Bucket | 2.4 m, 907 kg | 12 ft, 2,000 lb |
| | 4.6 m, 907 kg | 15 ft, 2,000 lb |
| | 3.7 m, 907 kg | 12 ft with winch, 2,000 lb |
| Truss Boom | 2.4 m, 455 kg Capacity | 8 ft, 1,000 lb Capacity |
| Fork Mounted Work Platform | | |
| Lifting Hook, Fork Mounted | | |
| Material Handling Arm | 1,814 kg Capacity | 4,000 lb Capacity |
| Trash Hopper | 1.8 m, 1.5 m³ | 72 in., 1.9 cu yd |
| | 907 kg Capacity | 2,000 lb Capacity |

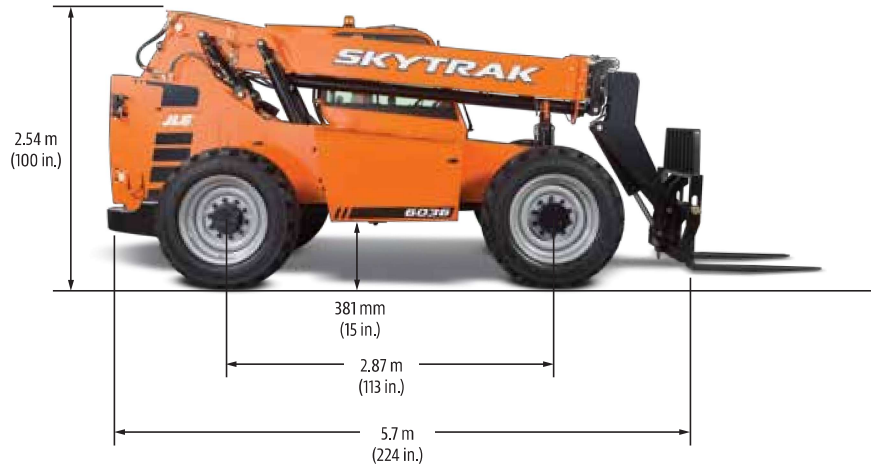
6036

TELEHANDLER

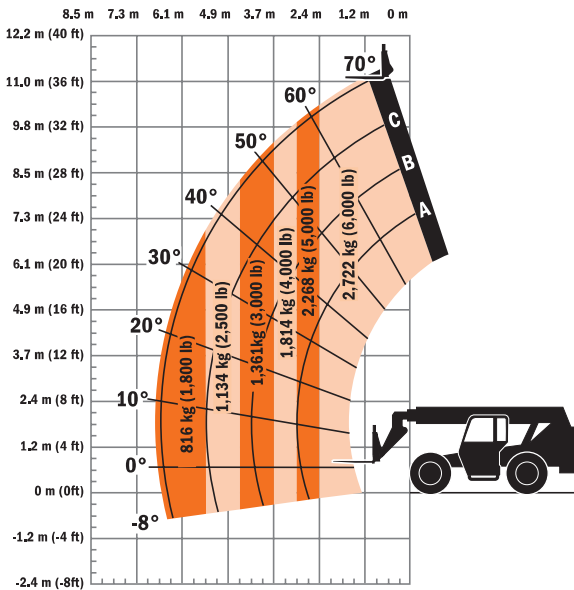
SKYTRAK

Dimensions

All dimensions are approximate.



Load Chart



The JLG "1 & 5" Warranty

JLG Industries, Inc. backs its products with its exclusive "1 & 5" Warranty. We provide coverage on all products for one (1) full year, and cover all specified major structural components for five (5) years. Due to continuous product improvements, we reserve the right to make specification and/or equipment changes without prior notification. This machine meets or exceeds applicable OSHA Regulations in 29 CFR 1910.67, 29 CFR 1926.453, ANSI A92.5-2006, and CSA Standard CAN3-B354.2-M82, as originally manufactured for intended applications.

Part No.: 3132403LA
0915
Printed in USA



JLG Industries, Inc.
1 JLG Drive
McCconnellsburg, PA 17233-9533
Telephone 717-485-5161
Toll-free in US 877-JLG-LIFT
Fax 717-485-6417
www.jlg.com

An Oshkosh Corporation Company