

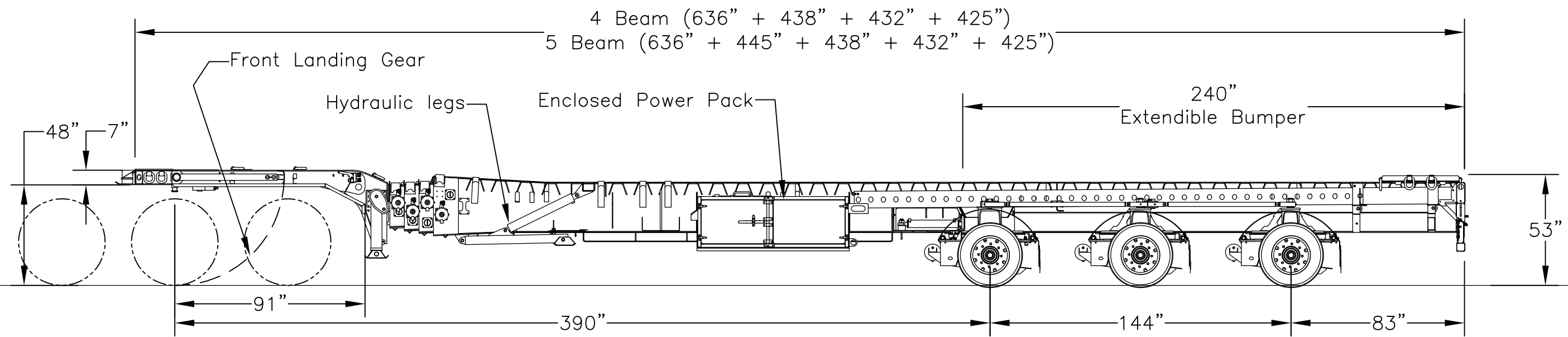
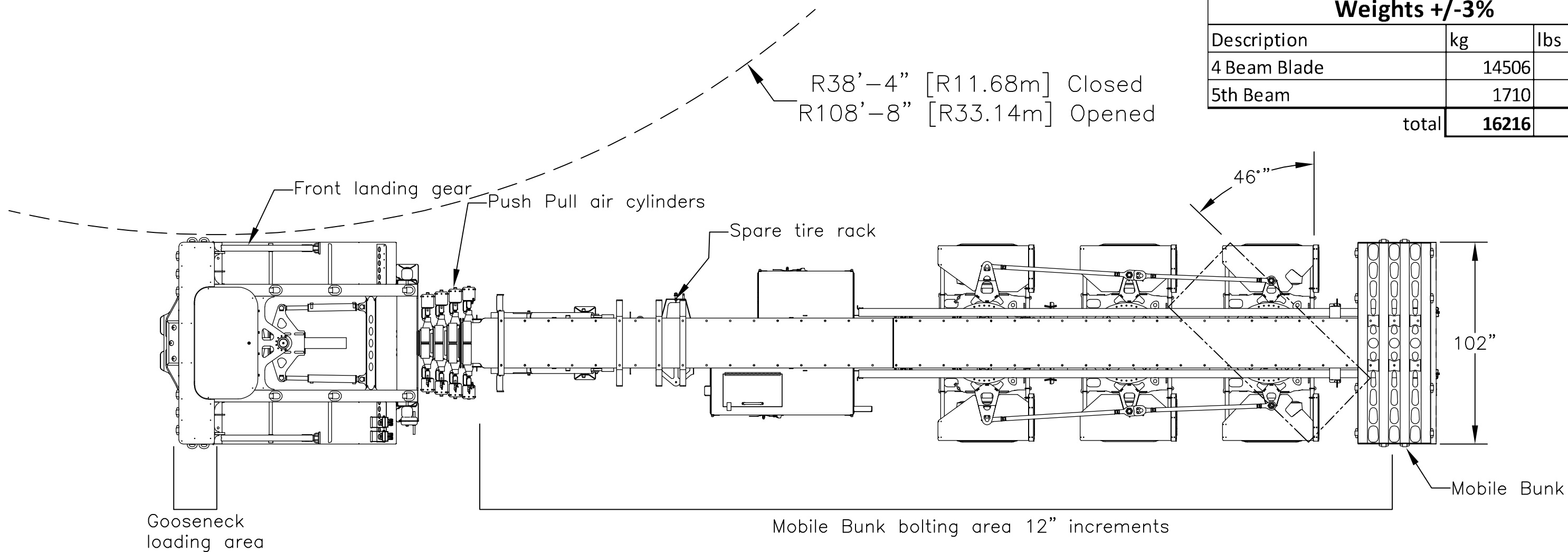
4'-7" [1.40m]  
 12764 lbs tare-trailer only  
 38600 lbs ther. Payload  
 60000 lbs GAWR

22985 lbs tare  
 37015 lbs ther. Payload  
 60000 lbs GAWR

Mmax = 2,84X10<sup>6</sup> lbs\*in

Weights +/-3%		
Description	kg	lbs
4 Beam Blade	14506	31980
5th Beam	1710	3770
total	<b>16216</b>	<b>35750</b>

R38'-4" [R11.68m] Closed  
 R108'-8" [R33.14m] Opened



Notes:  
 1. Closed length 53ft as a 4 or 5 beam configuration  
 2. 20 000lbs/axle as 17.5" rims

**TEMISKO (1983) INC.**  
 91 RUE ONTARIO, NOTRE-DAME-DU-NORD, PQ, J0Z 3B0

Layout Blade Trailer  
 4-5 Beam

Fichier :  
 DESS.: PC Date: 17-03-28  
 Work Order # :  
 TM0018